

A close-up photograph of several frozen raspberries. The berries are a deep red color and appear to be covered in a thin layer of frost or ice. They are arranged in a cluster, with some showing the characteristic bumpy texture of raspberries.

Zippers

The logo for Boston Matthews, featuring the company name in a bold, sans-serif font. The text is white and is set against a dark blue oval background with a thin white border.

**Boston
Matthews**



Growing Worldwide Demand

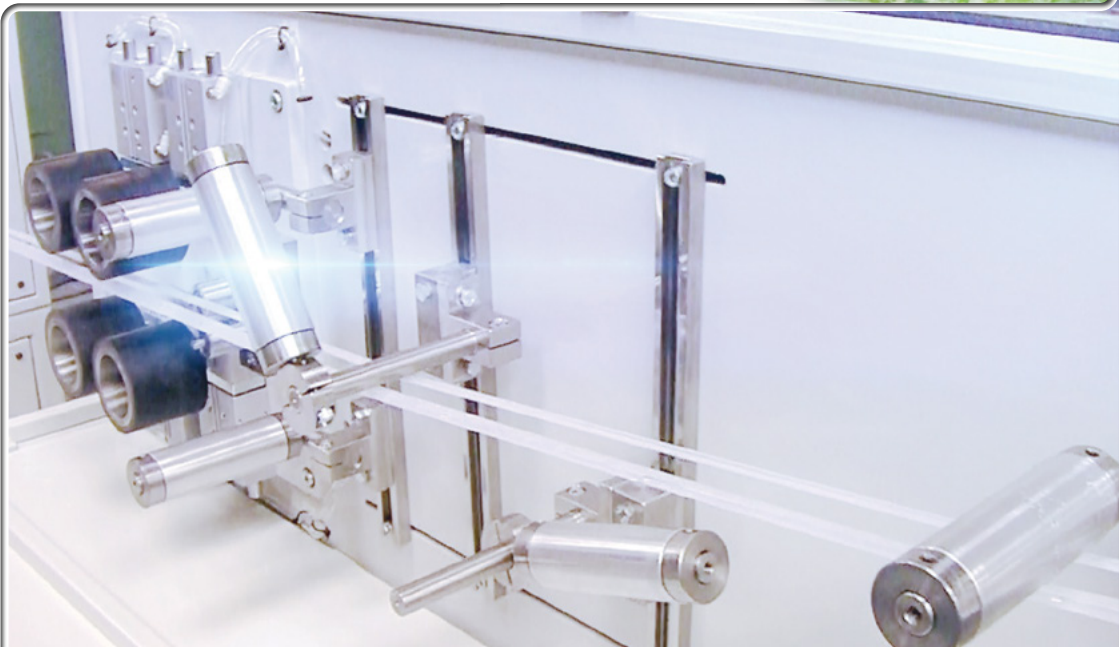
The advantageous and appealing characteristics of resealable packaging has seen a massive growth in the demand for plastic zipper profiles throughout the World.

To be able to accommodate this growth and changing demands of the market, manufacturers of Zippers must have the most suitable production (extrusion) technology and machinery.

Pouch demand growing
by 6.2% to top \$37.3 billion
- Freedonia Group

Boston Matthews fully understands the requirements of successful zipper production and has designed the complete extrusion line to meet with the ever changing demands of the industry:

- Zipper Construction
- Polymers associated with Zippers
- Quality requirements of the final Zipper
- Acceptable production speeds





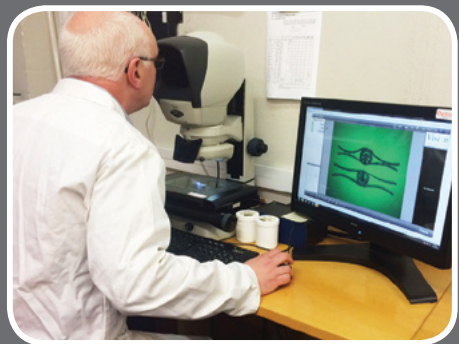
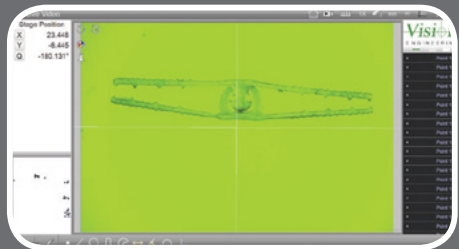
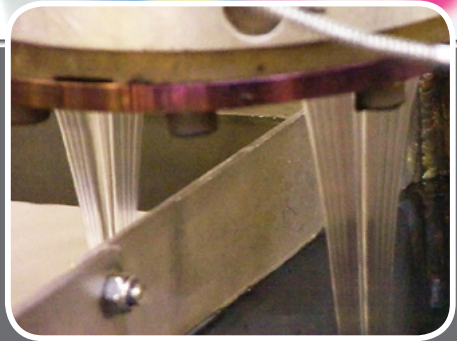
Advanced Extrusion Technology

With more than 50 years' extrusion machinery manufacturing and polymer processing experience Boston Matthews has developed a COMPLETE TURN-KEY SOLUTION for Zipper extrusion. Advanced 3D design technology, Polymer Flow Simulation and Precision Manufacturing Technology.

A Turn-Key Solution

We understand and listen to your requirements to ensure you have an extrusion system to meet with your demands now and in the future.

- Jockey Extrusion Options – e.g. With coloured stripe, EVA etc
- Produce Male & Female Together or separate
- Easy Die Head Adjustment
- Typical Line Speeds of Upto 60m/min or 150m/min
- High Speed Automatic Winding
- PLC Line Control





Boston Matthews
12136 Wiles Road
Coral Springs
FL 33076

Tel: +1 954.575.3627
Fax: +1 954.575.3630
www.bostonmatthews.com
sales@bostonmatthews.com

Working with You:

From initial technical discussions through to training and installation Boston Matthews will work closely with your team.

- Line Layouts & Services Locations
- Pre-Approval Concept Drawings & Layouts
- Pre-Delivery Testing & Acceptance
- Operator Training
- On-Site Commissioning
- After market - Dedicated Spare Parts Departments, Processing Engineers, Technical Support



Boston Matthews Turn-Key Extrusion Lines:

- Automotive
- Medical Devices & Life Sciences
- PEX & PB Pipe (HVAC)
- Cosmetic Squeeze Tube
- Rod & Plate
- Zippers
- Aerosol Dip Tube
- Flexible & Rigid Profiles
- Heat Shrink Tube
- I.C. Carriers
- Wire & Cable
- Mircoducting

Boston Matthews Extruders & Downstream Equipment Ranges:

- Single Screw Extruders
- Jockey Extruders
- High Temperature & Fluorocarbon Extruders
- Cooling & Sizing Tank
- Caterpillar Take-Ups
- Cutters
- Saws
- Coilers
- Automatic Winders